

TETRA *Smart*[®]

THE LEADING EDGE OF RUGGED INDUSTRIAL PC
WITH 4 PCI SLOT EXTENSION

- Rugged aluminium attaché case.
- Intel[®] Core[™]2 Duo T7200 2GHz processor
- 2 Full length PCI slot + 2 Short PCI slot
- Optional ISA slots
- Up to 5 RAID HDD
- Multimedia features
- Silicon rubber keyboard with numeric keypad
- 15" TFT LCD protected display
- Ethernet Gigabit, PCMCIA
- CE / FCC conformity

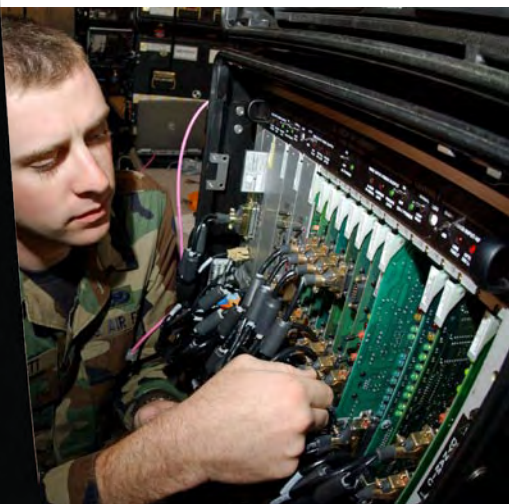


TETRA *Smart*[®]

When ruggedness and Extension capabilities is required



TETRA *Smart*



Get moving with the field-ready TETRASmart, the perfect platform for mobile applications requiring up to 4 full-length add-in PCI or ISA cards in option . Don't let the day to day abuse of the flight line, shipboard operations or forward deployed environments stop you. TetraSmart's welded stress-relieved aluminum case survives them all.

There's no missed detail with its bright 15" XGA display screen and multiple storage options allow room for huge data and video files.

TETRA^{smart}

■ Specification

CPU	Intel® Core™2 Duo T7200 2GHz
CACHE	4MB L2
FSB	667 MHz
PCI BUS	V2.2
RAM MEMORY	1GB to 3GB of DDRII RAM
VIDEO CONTROLLER	Intel 82945GME - 224MB RAM
HDD	160 GB SATA 7200 RPM
	Optional : Removable HDD
	Up to 5 RAID HDD SATA 2.5"
OPTICAL DRIVE	DVD/RW
ETHERNET	1x10baseT/100baseTX/1000 Base T
KEYBOARD	Silicon Rubber keyboard with numeric keypad
POINTING DEVICE	Built-in HulaPoint
AUDIO	Codec AC97 with 2 built-in speakers
FDD	Optional : USB FDD

■ Display

15" TFT LCD flat panel XGA display (1024 x 768)
 Brightness control
 Protected display

■ Interfaces

I/O PORTS	2x RS232C, 2x USB 2.0, 1x PS/2, 1x CRT, 1x RJ45, 1x mic, 1x line-in, 1x line-out, 1x SPDIF
EXPANSION	2 slots PCI Full length, 2 PCI Short Optional : 1 ISA full length + 1/2 ISA short + 1/2 PCI short available with Pentium IV processor
PCMCIA	Optional : take 1 slot

■ Power supply

AC INPUT	90 – 264 VAC; 47/63HZ ; 300W
DC INPUT	Optional : 12-30 VDC

■ Dimensions

426mm (16.5") W x 175 (6.7") H x 335 (13") D
 Weight : 9.8 Kg (21.5lb.)

Environmental Standard		
	Operating	Storage
Temperature	0°C to 45°C	-40°C to 70°C
Humidity	40°C 5% to 93% RH, non condensing	
Altitude	15000 ft	40000 ft
Shock	30g, 6ms, 10g (11ms)	40g, 6ms, 10g (11ms)
Drop	50 mm	100mm height free drop on steel plate. 1m in shipping carton
Vibration		9~200Hz/1g ; 200~500Hz/1.5g
Enclosure	eloxed folded stress-relieved welded aluminium	
Regulation	EN60950, CE, FCC Class A	



TETRA^{smart} : rubber keyboard and speakers



TETRA^{smart} : Left side

■ Modularity & Ruggedness

The modular design of the TETRA^{smart} enables our R&D team to imagine the solution which meets your application requirements.



Feel free to contact us for further informations or connect to the website www.tetracomputer.com

* Specifications are subject to change without prior notice