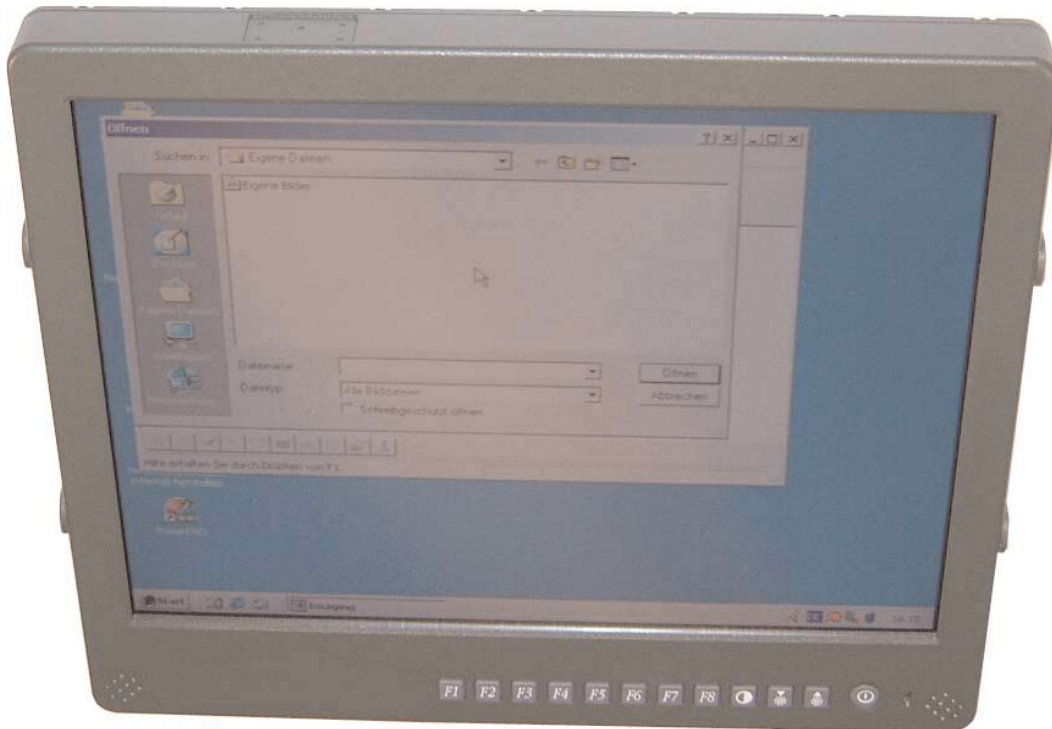


TETRA *display 15"*®

Ruggedised 15" Touchscreen Display

- 15" TFT Color Display
- optional Resistive touchscreen
- Viewing angle Vertical & Horizontal 170°
- Resolution (1024 x 768 pixel)
- Brightness 400 nits (bare LCD) and up to 320 nits (w/touchscreen)
- 8 functions keys
- Rugged aluminium cabinet
- Prepared for in-vehicle mounting
- Operating between -30 °C to +55 °C
- Certified IP54 & MIL STD 810F



TETRA *display 15"*®

The Tetra display 15" fit easily into a vehicle and comply with military standards in order to communication and information systems, even under hardest environmental conditions .

TETRA *display 15"*®

■ Specifications

15" TFT color display
 resolution of 1024 x 768 pixel
 Eight function keys
 Pointing device with left and right mouse- button
 Brightness 400 nits (bare LCD) and up to 320 nits (w/touchscreen)
 Optional with touchscreen (resistive)
 DVI and RGB input
 2x USB ports
 2 Speakers
 Backlight dimm down to "zero"
 Fast backlight shutdown
 Prepared for easy fitting into german vehicle mounts
 OSD Menu

■ Touch screen

ELO Accu-Touch SCN-AT-FLT21, 3Z01-OH1
 with five wire resistance technology
 resistive coating

■ Power supply

DC input 12-32V

■ Cabinet

Rugged Cabinet made of steel and aluminium

■ Dimensions

343 x 300 x 30 (58) mm

■ Poids

3.8 Kg

■ Environmental

MIL STANDARD 810F

■ Class of protection

IP 54

■ Temperature

Operating : -30°C to +55°C
 Storage : -20°C to +70°C



Display 40"



Display 21"

Feel free to contact us for further informations or connect to the website www.tetracomputer.com



Environmental Standard MIL-STD810F

	Operating	Storage
Temperature		
with heater	-30°C to +55°C	-20°C to +70°C
without heater	-10°C to +55°C	-20°C to +70°C
Rain	IP54	
Altitude	21.300m	21.300m
Shock	40g, 11ms	40g, 11ms
Vibration	5-500 Hz, 2g	5-500 Hz, 2g



- eight programmable function keys
- on/off button
- dimm LCD brightness
- backlight on/off



- Mousepoint with left and right Mousebutton



- DVI-In
- analog VGA
- additional Port for Touchscreen when using VGA
- 2 USB Ports



- ruggedised DC-In
- all connectors feature protective covers
- the covers for not used connectors can be fixed with screws



- prepared for existing Vehicle